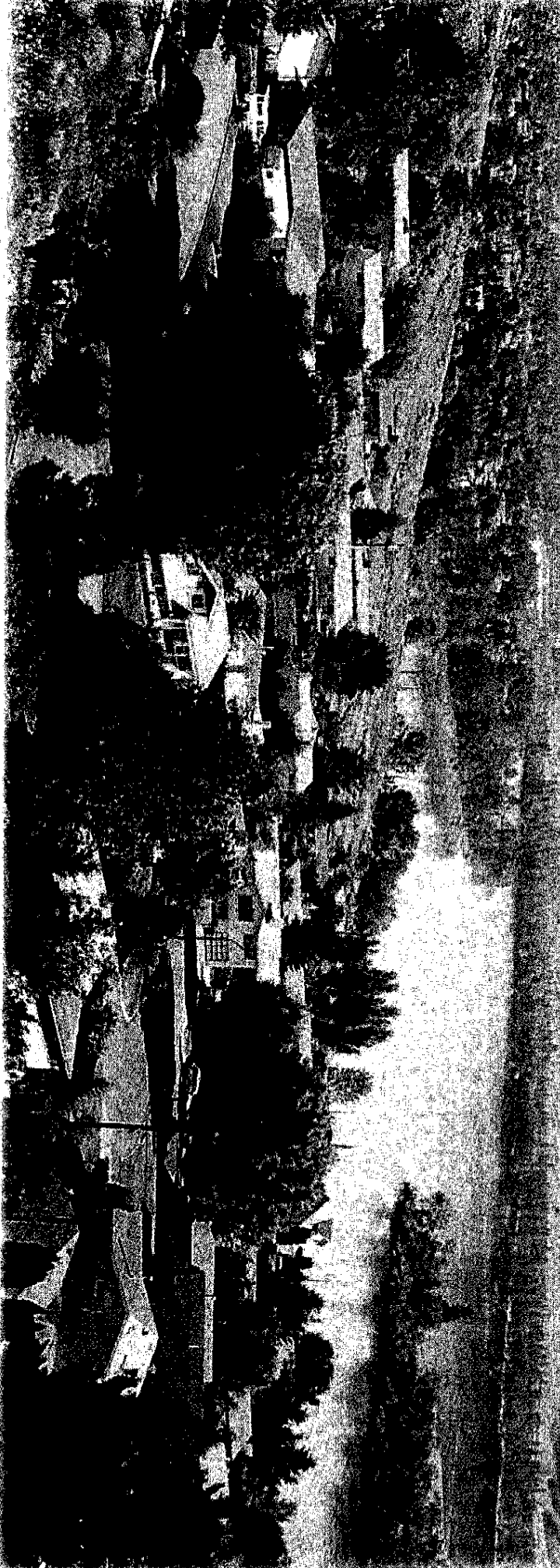


August 24, 2008 ♦ Volume 4 ♦ Issue 10

THIS WEEK NEW HOME BUYERS GUIDE

Room with a view

Saddleback Hills is building a lifestyle



FIRST TIME HOMEBUYER?

- Home ownership made easy
- 100% Financing*
- Don't be disappointed - be pre-approved
- Up to 120 rate day guarantee

invis

416-500 Notre Dame Drive
Kamloops, BC V2C 6T6

Brenda Colman
Mortgage Consultant
Tel: 250-318-8118
Email: brendacolman@invis.ca



ART

Under CONSTRUCTION

Subdivision is riding high in market saddle

SADDLEBACK HILLS SUBDIVISION IS ABUZZ with a couple of new developments just entering the market.

Phase 3 of Saddleback Hills has several new homes ready for occupancy, ranging in price from \$414,900 to \$534,900, and the release of phase 4 of building lots will be later this fall.

The Views at Saddleback is rolling out the second phase of this 48 bare-land strata complex.

The level-entry floor plans start at \$339,900 and, in keeping with the namesake, will offer optimum views of the city lights and the rivers winding below from the main

Floors and the walk-out basements.

The custom floor plans are designed to take in the amazing view each lot has to offer, while maximizing the square footage.

The interior features include quality finishing, wood cabinets, hardwood and tile flooring, gas fireplaces and vaulted ceilings, just to name a few.

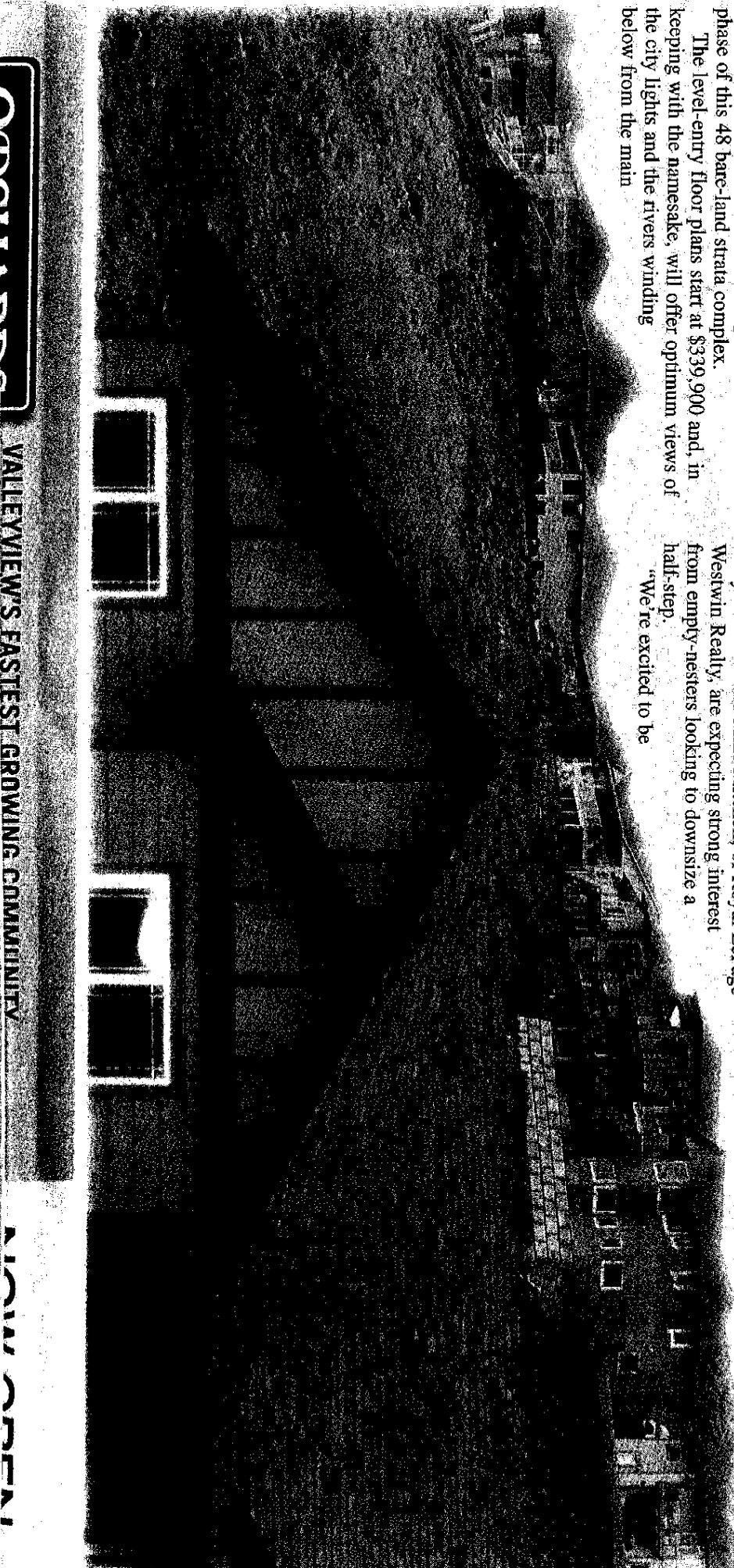
Lyn Gannon and Mike Mitchell, of Royal LePage Westwin Realty, are expecting strong interest from empty-nesters looking to downsize a

half-step.

"We're excited to be

offering a quality, unique product and an opportunity for people to maintain some yard space and square footage, without being tied to the maintenance of full-sized yards and homes," Gannon said.

◆ See **ENTRY-LEVEL B13**



ADDITIONAL PHASES

VALLEYVIEW'S FASTEST GROWING COMMUNITY

NOW OPEN!

Under CONSTRUCTION

Entry-level price for high-end homes

◆ From B12

Another feature of The Views is these units are bare-land strata where the owners assume maintenance and insurance of their homes.

This allows the expected strata fees for the Views to be approximately \$75.

Phase I of The Views offers level-entry style duplex units starting at \$299,900 and free-standing, basement-entry homes for \$314,900.

The first units will be available for occupancy at the end of November this year, with the phase 2 units available in the spring.

For more information, The Views website is the-views.ca, or call Mitchell or Gannon at Royal LePage Westwin Realty, 250-374-1461.

Open houses are now being held

Thursday from 6 p.m. to 8 p.m. and Saturday and Sunday from 1 p.m. to 3 p.m.

The Sagehill is another development in the Saddleback subdivision. The first phase of Sagehill includes 16 single-family homes ranging in starting price from \$419,900 to \$428,900, depending on the house and location.

Each home is 2,200-square-feet with three bedrooms, offering hardwood and ceramic tile floors, acrylic stucco exteriors and properties that backs on to parkland for those who like their privacy.

Sagehill is for those who want to upgrade into a new home and don't want to do the renovations.

So far, four units have been built, the rest will be built as they sell.

There are three show homes to look at and open houses are held every weekend.

